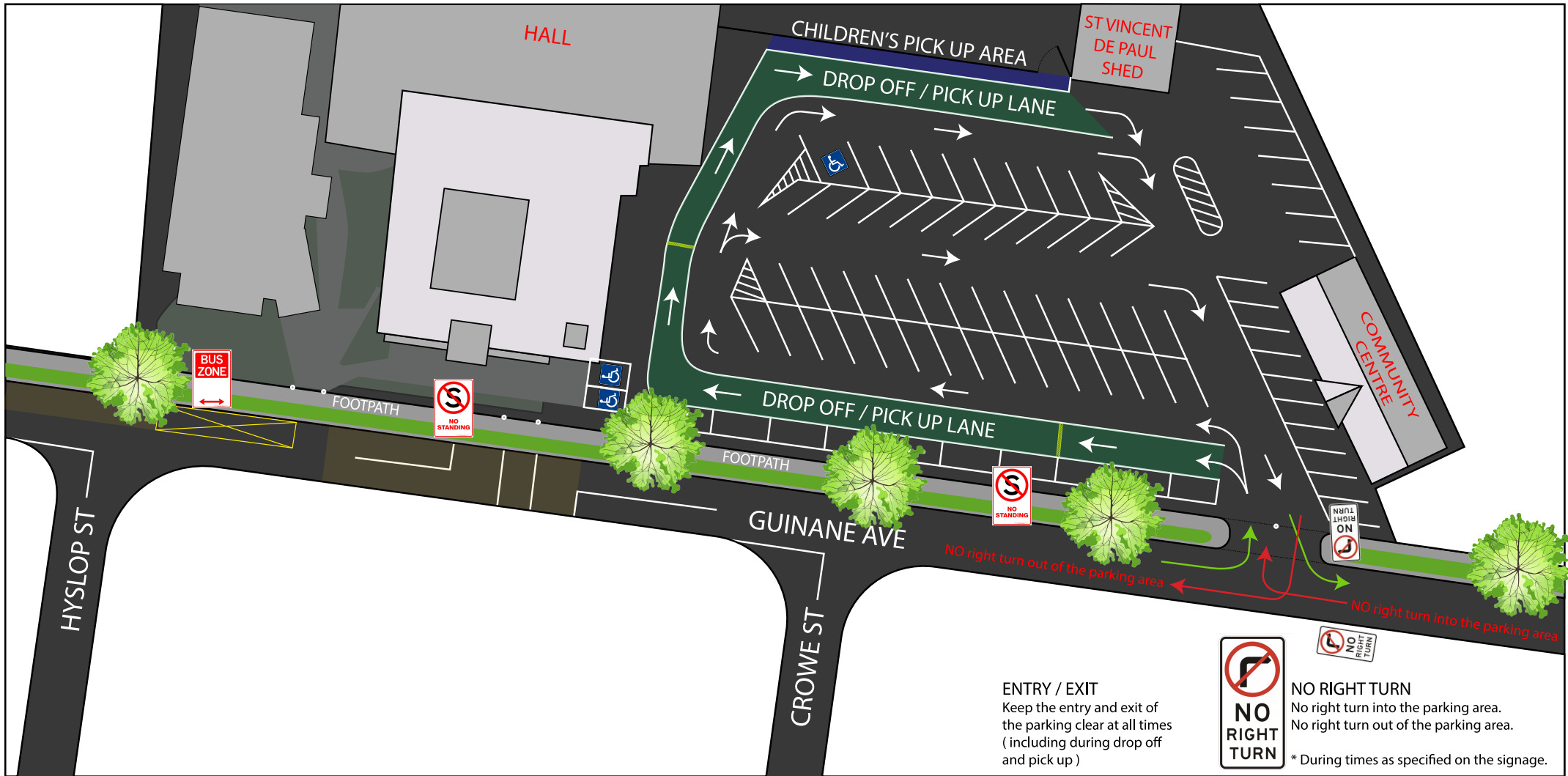


# ST PETER APOSTLE PARKING RULES - 1 August 2017



**BUS ZONE**  
 Only for public buses. Public passenger vehicles or taxis ( not private vehicles ) that are dropping off or picking up passengers. ( 30 minute limit or as shown on the sign ).



**NO STOPPING**  
 These signs tell you that you must not stop at the kerb for any reason. There may be time restrictions on these signs. You must not park at this location during these times.



**NO PARKING**  
 You are allowed two minutes in a "No Parking" area only if you remain within three meters of the vehicle and you are picking up or dropping off passengers or goods. Otherwise, if you stop, you are considered to have parked, even if you stay in the vehicle.



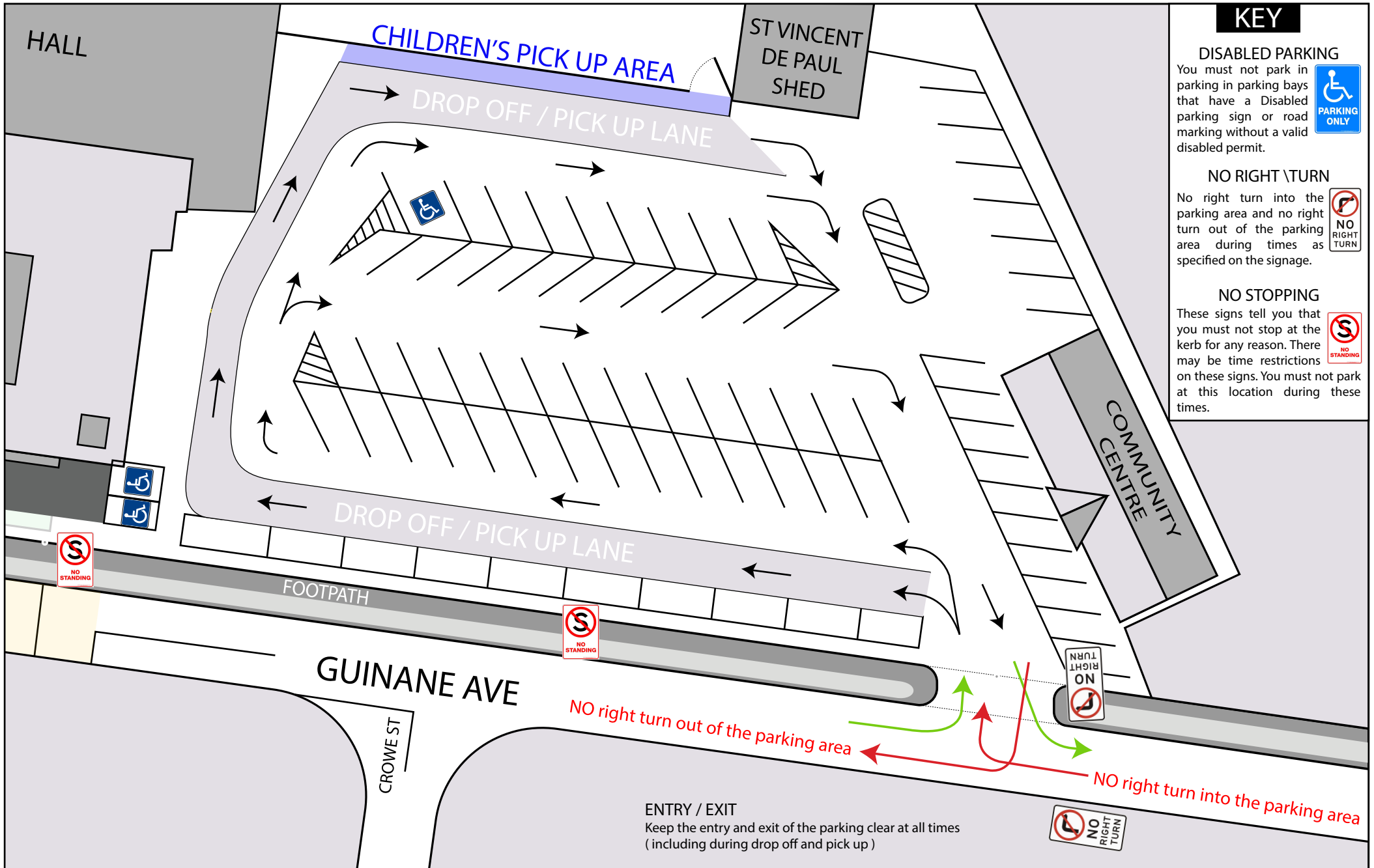
**DISABLED PARKING**  
 You must not park in parking bays that have a Disabled parking sign or road marking without a valid disabled permit.



**NO RIGHT TURN**  
 No right turn into the parking area. No right turn out of the parking area.  
 \* During times as specified on the signage.



# ST PETER APOSTLE PARKING RULES - 1 August 2017



## KEY

**DISABLED PARKING**  
 You must not park in parking bays that have a Disabled parking sign or road marking without a valid disabled permit.



**NO RIGHT TURN**  
 No right turn into the parking area and no right turn out of the parking area during times as specified on the signage.



**NO STOPPING**  
 These signs tell you that you must not stop at the kerb for any reason. There may be time restrictions on these signs. You must not park at this location during these times.



**ENTRY / EXIT**  
 Keep the entry and exit of the parking clear at all times (including during drop off and pick up)

