



# St Peter Apostle Catholic Primary School

Learn, relate and live in the light of the Catholic faith.

Term 2 - Week 7B

30th May 2024

Mrs Karen Wilson  
Principal

16-38 Guinane Avenue,  
Hoppers Crossing, 3029

Phone:  
9749 1055

Fax:  
9748 8434

Email:

[office@stpeterahc.catholic.edu.au](mailto:office@stpeterahc.catholic.edu.au)



LEARN



RELATE



LIVE

Dear Families

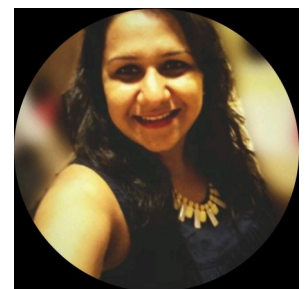
This week our Grade 6 students have left for camp at The Ranch which is on the Mornington Peninsula. Early reports from the Grade 6 teachers indicate that the children are having a great time and that they have a number of activities planned to accommodate the weather. We look forward to seeing them all return tomorrow and hearing of their adventures.

On Monday, the teachers participated in a professional development day facilitated by Berry Street Education. The Berry Street Education Model assists educators in building classrooms that are safe, healthy and engaging for all students. The majority of school closure days this year will be dedicated to the continuation of this professional development.

At the moment we have a number of students who are dedicating their time and efforts to preparation for Wakakirri. Wakakirri is a performing arts festival for schools that allows students to showcase their talents and interests. Miss Joyce has scheduled a number of practice sessions for the cast and it is great to see the dedication and enthusiasm they have shown. Details about performance dates will be released soon.

I am pleased to introduce the third member of our School Advisory Council for 2024 Tejal McKoy.

Tejal is a parent at our school who is also a member of the P&F committee. I would like to thank Tejal for her generous support of our school.



Regards

*Karen Wilson*

Principal

## Dates to Remember - 2024

29th - 31st May	Wed - Friday	Camp - Year 6 Forfeit due to camp - Interschool Sports (Winter) - Round 5
3rd June	Monday	School Tour - 4.00pm
7th June	Friday	Interschool Sports (Winter) - Round 6
<b>10th June</b>	<b>Monday</b>	<b>Kings Birthday - No School</b>
12th June	Wednesday	Year 1 - Inquiry Excursion
14th June	Friday	Interschool Sports (Winter) - Round 7 Year 4 - Assembly
16th June	Sunday	First Eucharist - 10.15am - Grade 4
18th - 19th June	Tues - Wed	Camp - Year 5
20th June	Thursday	Regional Cross Country
28th June	Friday	Last day of Term 2 - <b>1.00pm finish</b> CSEF Applications Close St Peter Feast Day - Casual dress day
15th July	Monday	Term 3 Commences Teeth on Wheels commence
2nd August	Friday	Wakakirri Performing Arts Eisteddfod
9th August	Friday	Year 2 Assembly
<b>26th August</b>	<b>Monday</b>	<b>School Closure Day</b>
6th September	Friday	Year 5 Assembly
18th September	Wednesday	Last day of Term 3- <b>students finish at 1.00pm</b>
<b>27th September</b>	<b>Friday</b>	<b>AFL Grand Final Public Holiday - No School</b>
7th October	Monday	Term 4 Commences
25th October	Friday	Year 6 Assembly
<b>4th November</b>	<b>Monday</b>	<b>School Closure day</b>
<b>5th November</b>	<b>Tuesday</b>	<b>Melbourne Cup Day - No School</b>
<b>18th November</b>	<b>Monday</b>	<b>School Closure Day</b>
29th November	Friday	Prep Assembly

# Reconciliation Week

This week we recognised Reconciliation Week with our whole school mural



## Walk Together Now More Than Ever

If you would like to find out more information about the importance of Reconciliation week please visit <https://www.reconciliation.org.au/our-work/>





## Mental Health Wellbeing Leader (MHWL)

Kirsten has twenty years of teaching experience, seven of those years in Reading Recovery and has a passion for literacy, social emotional learning, neurodiversity and mental health. She advocates a holistic approach to wellbeing which includes physical, spiritual, social emotional and mental health.

Kirsten has undertaken the mental health and wellbeing course through University of Melbourne. We are fortunate to have the Mental Health in Primary Schools (MHIPS) initiative which enables Kirsten to bring awareness of children's mental health and provide resources and supports for the whole school community.



### EXCITING NEWS

Teeth on Wheels will be visiting our School!



At Teeth On Wheels, we provide the highest quality dental treatment while making it fun, positive and memorable for children.

With the help of the government your child might be eligible for **FREE** dental care.

Our dental services include:

- ✓ Check-ups
- ✓ Oral Health Education
- ✓ Scale, Clean & Fluoride Treatments
- ✓ Fissure Sealants
- ✓ X-rays
- ✓ Fillings
- ✓ Extractions



CLICK OR SCAN THE QR CODE TO COMPLETE YOUR FORM



TeethOnWheelsAustralia



#teethonwheels

Phone: (03) 9338 1191

Email: [info@teethonwheels.com.au](mailto:info@teethonwheels.com.au)

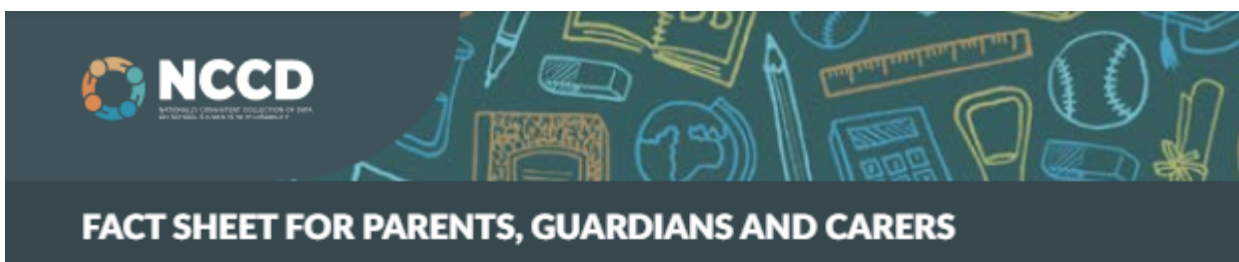


TeethOnWheels  
a positive dental experience

Click the link below to sign your child up - IT MIGHT BE FREE!

<https://teethonwheels.com.au/consent-forms/consent->

# NCCD Fact Sheet



## WHAT IS THE NCCD?

The Nationally Consistent Collection of Data on School Students with Disability (NCCD) takes place every year.

The NCCD is a collection that counts:

- the number of school students receiving an adjustment or 'help' due to disability
- the level of adjustment they are receiving to access education on the same basis as other students.

Students are counted in the NCCD if they receive ongoing adjustments at school due to disability. This 'help' allows them to access education on the same basis as a child without disability. The NCCD uses the definition of disability in the [Disability Discrimination Act 1992](#).

Schools provide this information to education authorities.

Go to *What is a reasonable adjustment?* below to learn about adjustments.

## WHY IS THIS DATA BEING COLLECTED?

All schools in Australia must collect information about students with disability.

The NCCD:

- ensures that the information collected is transparent, consistent and reliable
- provides better information that improves understanding of students with disability
- allows parents, guardians, carers, teachers, principals, education authorities and government to better support students with disability.

## Student with disability loading

Funding from the Australian Government for students with disability is based on the NCCD through the student with disability loading.

Students with disability who are counted in the top three levels of the NCCD (extensive, substantial and supplementary) attract the loading. Funding is based on a per-student amount at each of the three levels of additional support. The amount of the loading reflects the level of support students with disability need to participate fully in school, with higher funding for those who need higher levels of support.

Australian Government recurrent school funding is provided as a lump sum to school authorities including state and territory governments, which can then distribute the funding to their member schools according to their own needs-based arrangements.

The Government expects schools and school systems to consider their funding from all sources (ie Australian Government, state and territory and private) and prioritise their spending to meet the educational needs of all of their students, including students with disability.

## WHAT ARE THE BENEFITS OF THE NCCD FOR STUDENTS?

The information collected by the NCCD helps teachers, principals, education authorities and governments to better support students with disability at school.

The NCCD encourages schools to review their learning and support systems and processes. This helps schools to continually improve education outcomes for all students.

Supported by the Australian Government Department of Education and Training. © 2019 Education Services Australia Ltd, unless otherwise indicated. Creative Commons BY 4.0, unless otherwise indicated.



For more information [Click here](#)

## School Tour Monday 3rd June @ 4pm



We will be providing new families with a school tour on Monday, June 3rd at 4:00p.m. Please ask friends and family who live in our school's catchment area to register using the following link if they'd like to learn more about our school.

<https://www.stpeterahc.catholic.edu.au/register-for-our-school-tour/>

### Catholic Secondary School Enrolments

#### Enrolments to Catholic Secondary Schools 2025

If you intend to send your child to a Catholic Secondary School and have not already enrolled them, Enrolments have now closed . We strongly encourage you to contact the secondary school as soon as possible.

#### Year 5 Students in 2024 - Starting Year 7 in 2026

If you intend to send your child to a Catholic Secondary School applications for students Year 7 in 2026 will open on **Monday 29th January 2024** and applications will close on **Friday 16th August 2024**.

## St Peter's Community Hub News

- Wednesday June 5th 9.30-11am- 'Managing Children's Screen Time for Parents' presented by Anglicare Victoria.
- Cooking Workshops- will run for 4 weeks from 12.00-1.30pm. Thursday June 6th, Thursday June 13th, Thursday June 20th, Thursday June 27th. Free sessions to run in the Staffroom. Menu suggestions: spaghetti bolognese, schnitzel, cupcakes and school lunch ideas.



**COOKING  
WORKSHOP**

from 12.00-1.30 pm  
Thurs 6th June  
Thurs 13th June  
Thurs 20th June  
Thurs 27th June

**Adults only**  
**registration essential**



Sign up here for more  
information





## Managing Children's Screen Time for Parents

Struggling with your children wanting to spend hours on their devices? Wondering how to keep your children safe online?

- For parents of children aged 5-12yrs.
- Join us to learn some strategies around managing the amount of time your children spend on devices.
- Let's discuss ways to keep your children safe online.
- How to make and keep boundaries without tears.
- We will discuss ways to keep communication open with your children.

**DATE:** Wednesday the 5th of June

**TIME:** 9:30am - 11:00am

**WHERE:** St Peter The Apostle Primary School Community space.

**COST:** FREE

Register at the school reception prior to the session. Registration **MUST** be completed in order to attend.

Kellie Yeow  
[kellie.yeow@anglicarevic.org.au](mailto:kellie.yeow@anglicarevic.org.au)  
0488 600 052

[anglicarevic.org.au](http://anglicarevic.org.au)

BETTER  
TOMORROWS

## Term 2 2024

### 2nd Hand Uniform Dates

Located in the meeting room between school office and church.

Open Times - 8:15am to 9:30am - Friday

May 3rd, 17th & 31st

June 14th



# SACRAMENTAL DATES FOR 2024

## FIRST EUCHARIST

**Parent/ Student night** - Tuesday 30th April - 7.00pm

**Reflection Day - students only** - Friday 17th May

**Eucharist Masses -**

Saturday - 18th May - 6.00pm

Sunday - 19th May - 10.15am

Sunday - 16th June - 10.15am



## CONFIRMATION

**Parent/ Student night** - Tuesday 10th September - 7.00pm

**Reflection Day - students only** - Thursday 17th October

**Confirmation** - Thursday 17th October - 7.00pm



## SCHOOL FEES - 2024 & After School Care Information

2024	Fees		Levies					
	Recurrent	Capital	Curriculum	Swimming	Camp	Excursion	Sacrament	ICT
Family Fee	\$1,900.00							
Prep			\$320.00			\$80.00		
Year 1			\$320.00			\$80.00		
Year 2			\$320.00			\$80.00		
Year 3			\$350.00			\$80.00		\$212.00
Year 4			\$350.00			\$80.00		\$212.00
Year 5			\$350.00		\$250.00	\$80.00		
Year 6			\$350.00		\$300.00	\$80.00		

The ICT levy will continue in 2024 for our students in Grade 3 and Grade 4, as higher grades will still be part of the previous BYOD Program.

In 2025 the levy will be extended to Grades 3, Grades 4 and Grades 5.

If your family is eligible for the Reduced Fees Policy and you have been approved through the formal approval process, then the ICT levy will be included in the discount fees offered.

The benefits of this new program are as follows:

- Every Grade 3 child will have a device to use at school
- The device does not need to be fully paid for at the start of Grade 3

### 2024 FEE FORMS

2024 Fee Payment Consent Form [click Here](#)

2024 Credit Card Direct Debit Payment Form [click here](#)

**Please note:** A new Credit Card debit payment form needs to be filled **every year** for monthly/fortnightly payments

## Outside School Hours Care



St Peter Apostle Primary School's Outside School Hours Care Provider is Our Patch.

Information regarding outside school hours care [click here](#)

## CSEF

CAMPS, SPORTS & EXCURSIONS FUND (CSEF) School camps provide children with inspiring experiences in the great outdoors. Excursions encourage a deeper understanding of how the world works while sports teach teamwork, discipline and leadership. All are a part of a healthy curriculum.

CSEF is provided by the Victorian Government to assist eligible families to cover the costs of school trips, camps and sporting activities.

If you hold a valid means-tested concession card or are a temporary foster parent, you may be eligible for CSEF. A special consideration category also exists for asylum seeker and refugee families. The allowance is paid to the school to use towards expenses relating to camps, excursions or sporting activities for the benefit of your child.



## Camps, Sports and Excursions Fund APPLICATION Form

The annual CSEF amount per student is:

- \$150 for primary school students.

### **HOW TO APPLY:**

New applicants should contact the school office to obtain a CSEF application form or download a copy by [clicking here](#).

If you applied for CSEF at your child's school last year, you do not need to complete an application form this year unless there has been a change in your family circumstances.

- ⇒ You only need to complete an application form if any of the following changes have occurred: new student enrolments; your child has started or changed schools this year.
- ⇒ changed family circumstances; such as a change of custody, change of name, concession card number, or new siblings commencing this year.

Check with the school office if you are unsure.





# PARENT RESOURCES

Click on any image below for more information.

## STUDENT ABSENCE



## TERM DATES



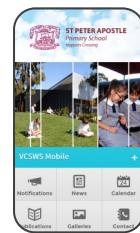
## CANTEEN / LUNCH ORDERS



## MOBILE PHONES



## SCHOOL APP



## AUTHORITY TO ADMINISTER MEDICA-



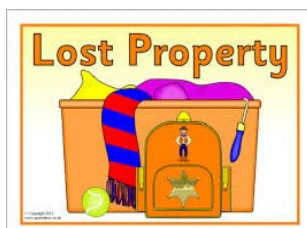
## SCHOOL UNIFORM



## STUDENT HEALTH



## LOST PROPERTY



## 2ND HAND UNIFORM SHOPPE



## OUTSIDE SCHOOL HOURS CARE (OSHC)

